

## Board of Directors

### Dave Anderson

Bergstrom Toyota

### Amy Ashton

Lakeside Elementary School

### William Austen

Bemis

### Jessica Benesh

Aurora Health Care

### Mei Bloechl

Bank First National

### Judy Britton

#### VP, Marketing

Retired, CP of Mideast WI

### Craig Burnett

Clareo Consulting LLC

### James Chitwood

Retired, UW Oshkosh

### Joann Cross

#### Treasurer

UW Oshkosh

### Barb Herzog

#### VP, Marketing

UW-Oshkosh

### Elly Heuring

Leadership Oshkosh Rep.

### Mike House

UPS

### Julie Hoyt, Secretary

Hoffmaster Group, Inc.

### Melanie Hunt

US Bank

### Catherine Huybers

UW Oshkosh

### Larry Lautenschlager

Winn. Co. Labor Council

### Mandy Potts

UW Oshkosh

### Stew Rieckman,

#### Pres. Elect

Retired, Oshkosh Northwestern

### Mark Rohloff

City of Oshkosh

### Mike Schellenger

#### President

UW Oshkosh

### Mike Schmidt

Festival Foods

### Amy Sitter

#### VP of Investments

US Bank Private Client Group

### Jennifer Skolaski

Nonprofit Leadership Consult.

### Todd Slagter

#### VP of Impact

Citizens First Credit Union

### Rita Voight

Health Care Credit Union

### Bruce Williams

BMO Harris Bank

### Tom Willadsen

First Presbyterian Church

## Campaign Team

### Amy Ashton, OASD

### Matt Bakalars, FVSB

### Mei Bloechl, Bank First National

### Brad Britton, Britton Shoes

### Judy Britton, Cerebral Palsy of Mideast WI

### Dick Campbell, Community Volunteer

### James Chitwood, UW Oshkosh retirees

### Christine Dancker, First National Bank

### Walt Domnie, A.L.S. Printing

### Sean Fitzgerald, B2B

### Phil Florek, UW Oshkosh

### Karen Fredrick, Westside Tire

### Mike Freund, US Bank

### Barb Herzog, OASD

### Meghan Kasper, Bank First National

### Jack Klein, Cliff's Tire & Service

### Melissa Kohn, FVTC

### Jason Monnett, WI Business Development

### Mandy Potts, UW-Oshkosh

### Sandra Reeser, Community Volunteer

### Stew Rieckman, Oshkosh Northwestern

### Wenda Roycraft, Community Volunteer

### Wendy Schwalbe, Family Services of NEW

### Mark Stockli, Oshkosh Family, Inc.

### Jim Stapel, Kitz & Pfeil

### John Vette, SNC

### Gary Wagner, Lutheran Homes & Health Svcs.

### Al Wenig, OASD

## Community Impact Committee

Nancy Behm

Barbara Beuscher

Lurton Blasingame

Karen Bowen

Craig Burnett

Joann Cross

Michelle Dalton

Anna Filipova

Mary Beth Gehrke

Joe Girard

Scott Hanson

Katherine Hanson

Melanie Hunt

Melissa Kohn

Larry Lautenschlager

Cheryl Minerath

Carol Morack

Kathryn Nichols

Tom Nigl

Nancy Norgord

Sandra Reeser

Mark Rohloff

Petra Roter

Sudipto Sarkar

Mike Schellenger

Julie Schmude

Jennifer Skolaski

Todd Slagter

Paul Spiegel

Ritu Tannan

Burk Tower

Amy Van Straten

Tom Willadsen

## Staff

**Sue Panek**, Executive Director

**Anne Hauch**, Financial Operations Director

**Pam Ruder**, Resource Development Director

**Geralyn Boegel**, Marketing & Outreach Specialist

**Ashley Hansen**, Administrative Support

**Karen Salzsieder**, Office Volunteer

**Carol Knight**, Office Volunteer

**Shirley Dailey**, Office Volunteer

**Mary Busha**, Office Volunteer



## Oshkosh Area United Way

# COMMUNITY REPORT

# 2014

## Mission:

To IMPROVE LIVES

by STRENGTHENING

our community's

capacity for SERVICE

and COMPASSION.



36 Broad Street, Suite 100

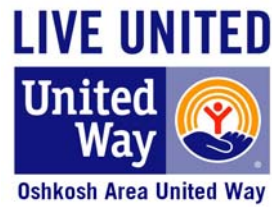
Oshkosh, WI 54901

920-235-8560

oshkoshunitedway.org

Dear Friends,

Close your eyes and think about what you want for our community. What would that look like? At United Way, we picture a community where every child has access to an education – an education that will prepare him or her with the skills necessary for a job that could provide a living wage to support a family. (In Winnebago County, that would be \$18.07 per hour for a family with two adults and two children.) We envision programs to help people in poverty and provide them with a pathway to self-sufficiency. We visualize a community where people maintain good health through healthy lifestyles and by having access to health care. We see a community of private and public organizations that work together to accomplish great things and serve as a model for other communities.



Because of **you** and **your generous support**, we are able to look at our past and dream about our future as a community. This year's **Local Focus. Local Results.** campaign was challenged with the task of raising the funds to make our vision a reality. We will continue to challenge ourselves to support programs that meet the needs in our community. We will continue to prioritize those needs identified as critical to our community's success, and we will continue to work as a convener, collaborator, innovator, and catalyst for change.

So, you might ask, what excites the United Way about the work we do? As we embark on our Women, Poverty and Economics initiative, we are excited about the possibilities for an innovative approach to solving the root causes of how and why more women live in poverty than men. (Twice as many to be factual). We are eager to building more Born Learning Trails so our children and their parents may engage in fun early learning activities. And, it blows our minds the opportunities we have when it comes to partnerships - like the LIFE Study community needs assessment, or the Weight of the Fox Valley healthy living initiative.

As a community, Oshkosh has seen many positive changes. As representatives of your United Way, we are proud of the work we've done and will strive to continue to do great things. We look forward to your continued support and working with each of you to build a stronger more vibrant Oshkosh.



Thank you.

**Michael Schellenger**  
President

**Sue Panek**  
Executive Director

## The Year at a Glance



See our full financial statements at [oshkoshunitedway.org](http://oshkoshunitedway.org)

## Top Corporate Partners

Associated Bank  
 Aurora Health Care  
 Bemis  
 Bergstrom  
 Best Western Premier Hotel and Ground Round  
 Blended Waxes  
 BMO Harris Bank  
 Brunswick Foundation  
 C.R.E.W.  
 Canadian National  
 Dr Pepper Snapple Group  
 Eastbay Inc.  
 Festival Foods  
 Fox Valley Savings Bank  
 Generac Industrial Power  
 Georgia-Pacific  
 Heath Care Credit Union  
 Hoffmaster Group  
 Keenline Conveyor Systems  
 Kimberly-Clark  
 Oshkosh Northwestern  
 Mercy Medical Center  
 Oshkosh Area Community Foundation  
 Oshkosh Corporation  
 Silver Star Brands  
 SMC Metal Fabricators  
 SNC Manufacturing  
 Target  
 UPS  
 US Bank  
 Wisconsin Public Service

## Additional Corporate Donors

A. P. Nonweiler Company  
 A.L.S. Printing  
 AAA Insurance  
 Acee Deucee Lounge  
 Anderson Cleaning Systems  
 Bank First National  
 Binder Auto Service  
 Britton's Walkover Footwear  
 Cliff's Tire and Battery  
 Confidential Assistance Program  
 Custom Design Workshop  
 Discher Architectural Millwork  
 DPI - Digital Printing Innovations  
 Duo Safety Ladder Corp  
 Edward D Jones & Company  
 First Business Bank  
 Fox Communities Credit Union  
 Globe Manufacturing  
 GNC/StrataGraph  
 Govani Dental  
 Handlebar Barbershop  
 Harold Carpenter, Inc.  
 Independence Financial  
 Insurance Services by Karen  
 J. Stadler Machine, Inc.  
 Jacobson Auto Sales II  
 Jet Stream Car Wash  
 Kitz & Pfeil True Value

Konrad-Behlman Funeral Homes  
 Krumenauer Company  
 Luedeke's Automotive Service  
 Oshkosh Community Credit Union  
 Oshkosh Community YMCA  
 Poeschl Printing Co. Inc.  
 Provident Financial Consultants  
 Richards Insurance  
 Sammons Plumbing Oshkosh Inc.  
 Shallbetter, Inc.  
 Stannard Launderers  
 Steinert Printing Company  
 Thomas Insurance Group  
 United Health Group  
 UR Next Barber Shop  
 W W Electric Motors Inc.  
 West Pointe Bank

## Service Club Donors

Altrussa Club  
 Oshkosh Mid-Morning Kiwanis  
 Oshkosh Rotary Club  
 Oshkosh Southwest Rotary Club  
 Women's Division - Oshkosh Area

## In-Kind Donors

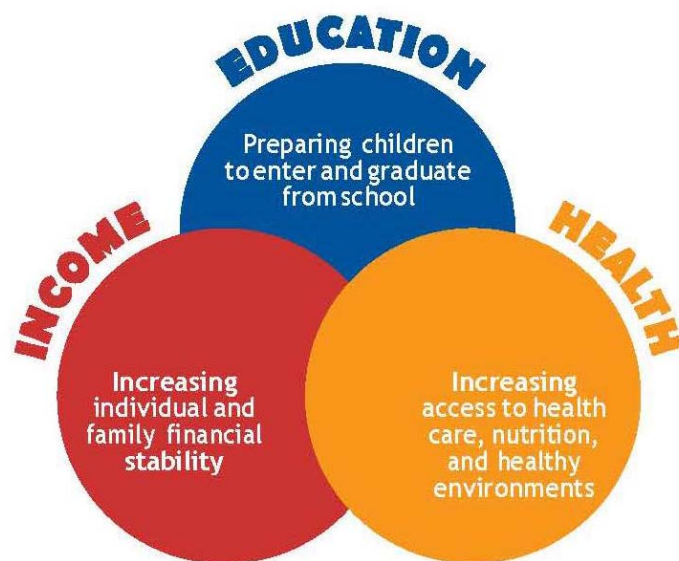
44 North	Clifton Larson Allen	Kitz & Pfeil	Pepsi
4Imprint	Cousin's Subs	Kossel's TV & Appliance	Moose Inn
95.9 KISS	Crystal Springs Golf Course	Lake Breeze Golf Club	Papa John's
ALS Printing	EAA	Lakeshore Municipal Golf Course	Primo
Bay Ridge Golf Course	Evergreen Manor	Lara's Tortilla Flats	Red's Pizza
Best Western Premier Waterfront Hotel	Fratello's	Lee Beverage	Rhyme
Castle Pierce	Golfer's Outlet	Lowe's	Riverside Golf Club
Chalice	Green Bay Packers	Michael Cooney Photography	Shorewood Golf Course
Christiano's	Horicon Marsh Sportsman's Club	Mid Vallee Golf Course	South of the Border
Chula Vista	Horseshoe Bay Golf Club	Mike's Place	The Roxy
Citizens First Credit Union	Jet Stream	Milwaukee Brewers	
City of Oshkosh	Jim Koepnick Photographer	Milwaukee Bucks	
Cliff's Tire & Battery	KISS FM		



# Great Things HAPPEN when we LIVE UNITED

Thank you for supporting your community through United Way!

Take a look at just a few examples of the great things YOU make happen for people right here in Oshkosh!



## Abby

Abby was struggling in school especially with reading and was eating lots of snack foods and soda.

After being matched with an adult mentor and participating in fun learning opportunities together, Abby is eating healthier and reading better.

Abby smiled when she said, "Since I've been working with my mentor, I make better snack choices and I'm doing better in school because she showed me that reading can be fun!"

## Rachel

Rachel is a single mom to two teens. She always dreamed of owning a home.

When Rachel first came to FISC for budget counseling she was struggling with her finances and had a low credit score.

After following the action plan and budget that she and the counselor created, Rachel began to make progress. She paid down her debt and improved her credit score.

Rachel has recently been approved to be a homeowner and is looking forward to a bright future for her family - in a home of their own.

## Joe

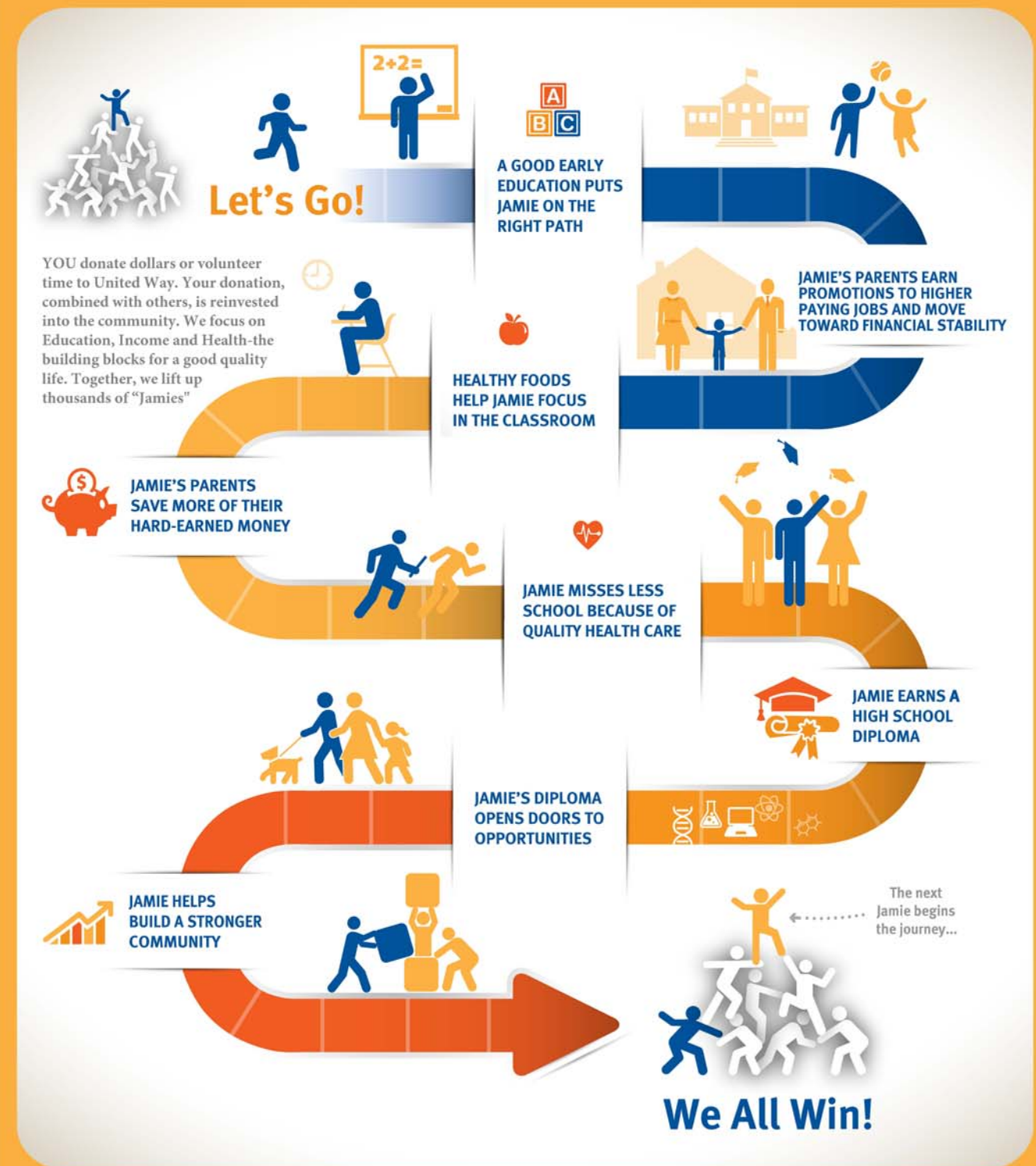
After Joe was diagnosed with early dementia, he started isolating himself and spending more time just sitting in front of the television. He had once been a very social man and his family wondered if he could regain that side of himself.

After attending Mindworks for a few months, Joe started becoming social again and talking with friends more.

He attributes the change to the group. He said, "I love coming to group. I don't have much time for TV anymore because I am busy doing my homework. Before I started coming, I was just sitting around getting depressed."

# How YOU Make a Difference...

Meet Jamie.  Jamie is a child who wants to succeed. All Jamie needs is an opportunity.



To learn more about how even a small change can strengthen your community, check out our interactive Common Good Forecaster. [www.UnitedWay.org/forecaster](http://www.UnitedWay.org/forecaster)



# Oshkosh Area United Way 2014 Community Investment

## Education

- Big Brothers Big Sisters
  - \$ 51,600 – Community Based Mentoring
  - \$ 8,400 – Site Based Mentoring
- Boys & Girls Club
  - \$ 30,000 – Basic Needs (Help Youth Succeed)
  - \$ 30,000 – Teens on Track
  - \$ 30,000 – Radford Kids
- Cerebral Palsy
  - \$ 22,000 – Advocacy
  - \$ 27,500 – Life Basics
- Christine Ann Domestic Abuse Services
  - \$ 12,800 – Youth Advocacy/Prevention
- Girls Scouts of the Northwestern Great Lakes
  - \$ 17,000 – Membership
  - \$ 3,000 – Reach Out
- Oshkosh Area United Way
  - \$ 21,000 – Imagination Library
- Reach Counseling
  - \$ 9,000 – Education & Advocacy Programs
- UW Extension/OAUW
  - \$ 1,500 – VITA
  - \$ 1,500 – Money Management
- Oshkosh Community YMCA
  - \$ 55,500 – Member Scholarships

## Income

- ADVOCAP
  - \$ 80,000 – Bridges Program
- American Red Cross
  - \$ 45,000 – Disaster Services
- FISC
  - \$ 33,000 – Budget Counseling
- Legal Action of Wisconsin
  - \$ 21,000 – SE Asian Advocate Project
- Oshkosh Community Pantry
  - \$ 12,000 – Pantry Operations
- Information and Referral
  - \$ 20,000 – 2-1-1
- Winnebago County Literacy Council
  - \$ 27,000 – One-on-One Tutoring Adults
  - \$ 5,000 – Family/ English Classes
  - \$ 3,000 – Road to Work

## Health

- American Red Cross
  - \$2,000 – Health Equipment
- Catholic Charities
  - \$ 3,000– Refugee Family Strengthening
  - \$ 11,000 – Mental Health Counseling
- Cerebral Palsy
  - \$ 3,500 – Resident Camp
  - \$ 62,500 – Out-of-home Respite
- Christine Ann Domestic Abuse Services
  - \$ 34,000 – Emergency Shelter
  - \$ 11,200 – Client Advocacy
- Day-By-Day
  - \$ 6,000 – Warming Shelter & Operations
- Family Services of NEW
  - \$ 32,540 – Home Visits
  - \$ 5,000 – Supervised Visitation
  - \$ 2,000 – Family Wellness
- Lutheran Social Services
  - \$ 7,500 – Older Adult Counseling
  - \$ 2,000 – Adult Day Services
- Oshkosh Family, Inc.
  - \$ 15,500 – Meals on Wheels
- Reach Counseling
  - \$ 28,393 – Counseling
  - \$ 8,697 – Sexual Abuse Treatment Program

## Health Fund

- \$ 1,200 – American Red Cross
- \$ 1,571 – Evergreen Retirement Community
- \$ 1,750 – Lutheran Homes of Oshkosh
- \$ 2,143 – Park View Health Center
- \$ 24,576 – Living Healthy Clinic, UW Oshkosh
- \$ 8,000 – Tri-County Dental Clinic

## Administrative Costs

\$ 149,504

## Reserves (designated for specific purposes)

- \$ 50,000 – Uncollected Pledges
- \$ 25,000 – Designated to Other United Ways
- \$ 5,000 – Outcome Evaluation Project
- \$ 75,000 – Women, Poverty and Economics
- \$ 10,000 – Weight of the Fox Valley

## Special Projects

- \$ 5,000 – L.I.F.E. Report
- \$ 10,000 – Oshkosh Funding Consortium
- \$ 10,000 – Program Initiative Fund
- \$ 74,580 – Allocations & Outcome Measures

## In-kind Initiatives

- Community Back to School Fair
- Day of Caring
- FamilyWize
- Hunger Task Force
- Refugee Resettlement Task Force
- Hub Community Partnership

## Trustworthy and Effective

At Oshkosh United Way, we invest in programs that produce results, and in agencies that manage their money wisely. We have been recognized nationally and locally for our high rate of efficiency. More than 88% of the money raised in the annual community campaign is allocated to programs in the Oshkosh Community, far exceeding the 65% minimum considered acceptable by Charity Navigator, the leading independent charity evaluator.



**Goal: Every child has a chance for success in school, work and life**

\*Oshkosh's first Born Learning Trails completed thanks to a \$7,500 grant from Affinity Health and the help of Bemis, Oshkosh Parks Department, OASD and Dr. Pepper Snapple Group. The Trails are designed to boost language and literacy skills while kids and parents engage in fun activities.

\*In 2014, the 2,000<sup>th</sup> child graduated from the Dolly Parton Imagination Library program. The DPIL provides books to preschoolers and offers early learning opportunities to prepare them for school.



**Goal: Every individual and family has financial stability and independence**

\*2,423 local residents saved \$56,400 on prescription medicine with the free FamilyWize discount card

\* \$386,151 were returned to local taxpayers through the VITA free tax assistance program. 67% of taxpayers indicate the money will be used to pay off debt or catch up on bills.



**Goal: Every resident has access to healthy food options and quality medical, mental and dental health**

\*In the pilot year, 149 students received mental health care through the Helping Our Students Thrive (HOST) program, which provides school-based mental health services to students who typically would not have access. Already, teachers have reported reduced absenteeism for students who participated.

\*More than 60% of residents in Calumet, Outagamie, and Winnebago County are overweight or obese. As part of the Weight of the Fox Valley (WOTFV), a three-county initiative with a mission for residents to achieve and maintain a healthy weight at every age, we are working to improve health outcomes in the region.